

ENGLISH



I-TRAP 120 LED

I-TRAP 120 WP LED

Without mounting ceiling hooks, only bracket mounting

Instruction manual

insect control unit



ALCOCHEM
HYGIENE

ABOUT THE I-TRAP 120 LED / I-TRAP 120 WP LED

The information in this service manual is based on the latest information, and is provided subject to alteration. We reserve the right to change the construction and/or configuration of the unit at any time without obligation to modify earlier versions .

*Please read this Manual carefully before taking
any action with regard to your I-TRAP 120 LED / 120 WP LED.*

Congratulations on the purchase of this high quality electric insect-trap. Before using this unit we ask you to read this manual carefully. If you have any questions afterwards please contact Alcochem Hygiene, see www.insect-trap.net for details.

The information in this manual is based upon the latest information, and is provided subject to alteration. We reserve the right to change the construction and/or configuration of the unit at any time without obligation to modify earlier versions.
Store this manual carefully for future reference.

SAFETY

When using any electrical equipment, basic precautions to reduce the risk of fire, electric shock and personal injury must always be followed including, but not limited to, the following:

- Consider the work area environment. Keep the work area clean and well lit.
- The unit should be connected to mains power (100-240 V ~ 50-60 Hz)
- Do not use in the presence of flammable materials.
- Do not damage the power cable. Keep it away from heat, oils and sharp edges.
- Maintain the unit with care. Keep the unit clean for effective and safe performance.
Follow instructions for changing accessories.
- Disconnect mains power when not in use, before servicing, and when changing accessories or components.
- Make a habit of checking to see that service tools are removed from the fly control system before turning it on.
- The use of any accessory or attachment other than recommended in these operating instructions may present a risk of personal injury.
- The unit complies with relevant safety rules.
- Repairs should only be carried out by qualified persons using original spare parts.
Failure to comply with this direction may result in considerable danger to the user.
- Use a safe mains connector with a proper earth pin.
- Wiring in the fly control system meets safety standard EN 60335-2-59
- Always leave repairs *(other than cleaning, glue board replacement or replacing the lamp)* to your dealer/distributor.

Note: *Only use lamps and spare parts from Alcochem Hygiene for service and maintenance.*

RECEIPT OF EQUIPMENT

While unpacking, check for any signs of shipment damage and, if found, notify both transporter and supplier in writing within 8 days of receipt with full details of the damage that has occurred and retain the equipment and packing materials for inspection.

- Check that all parts have been received as ordered.
- Make sure that all packaging is removed from the unit before use.



INSTALLATION

To achieve maximum effectiveness, the following installation notes must be followed:

- Choose a place where the unit can be reached and cleaned, that is at least 1.2 m off the ground of the reach of children
- Avoid areas where obstacles will limit the ability of insects to reach the unit.
- Avoid air currents from fans or air-conditioners, and avoid direct sunlight.
- Use good quality mounting materials.
- Use a safe mains connector with earth pin.

Note: insect control unit should never be placed directly above uncovered food!!

MAINTENANCE/REPLACEMENT

The **I-TRAP 120 LED** insect trap requires little maintenance other than cleaning, and replacing the glueboard and lamp.

- 1) Cleaning
 - a) Disconnect the unit from the mains.
 - b) Remove dead insects from the collection tray.
 - c) Wipe the collection tray and casing clean with a damp cloth or one moistened with methylated spirits.

- 2) Changing the Glueboard (C)
 - a) The glueboard can be replaced once the collection tray has been removed
 - b) Remove the old glueboard and insert a new glueboard.
The protective sheet must be removed before the new glueboard is inserted in the unit.
 - c) Put the collection tray back in position.

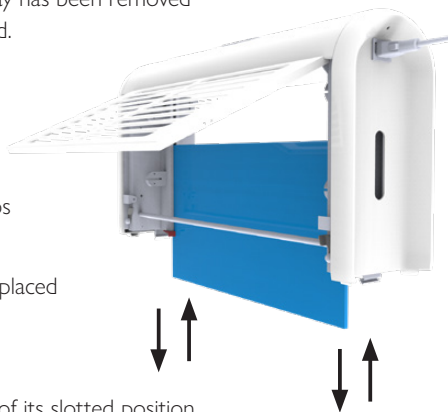
- 3) Lamp replacement (E)

We recommend replacing the **ASTRON UV-A LED** lamps once every 3 years before the main insect season starts:

The **ASTRON UV-A LED** lamps should in any case be replaced after 25.000 burning hours.

- a) Disconnect the unit from the mains power.
- b) Remove the collection tray
- c) Remove the front grid from the unit by clicking it out of its slotted position
- d) Take the lamp(s) from the lamp holder and remove the lamp(s).
- e) Place a new lamp(s) in the lamp holder.
- f) Mount all replacement parts in reverse sequence.

- 4) Mounting options [D]
 - a) Ceiling mounting : with 2 hooks on top of the unit (chains not in scope of supply) ONLY 120 LED : 120 LED WP with 1 mounting bracket for ceiling or wall(flag) mounting
 - b) Wall(flag) mounting : with bracket (in scope of supply)



Note:

When replacing the lamp use components of the same specifications.

Only use genuine lamps and spare-parts supplied by Alcochem for service and maintenance.



A. UNIT / REPLACEMENT PARTS

1x i-trap 120 LED
1x i-trap 120 WP LED



Replacement parts:

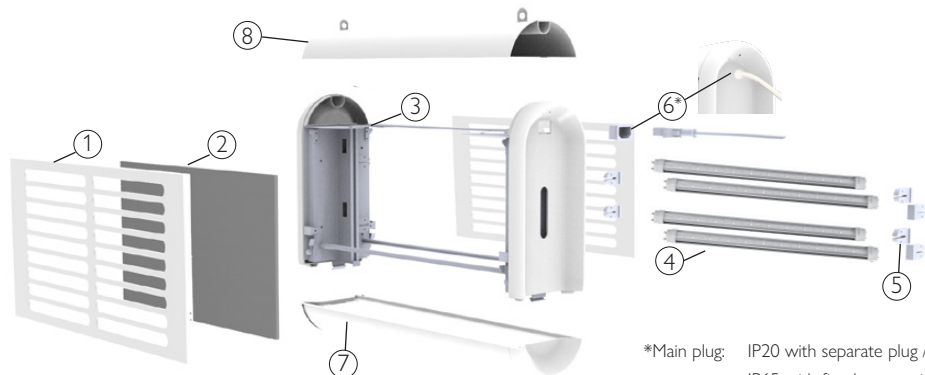


1x glueboard



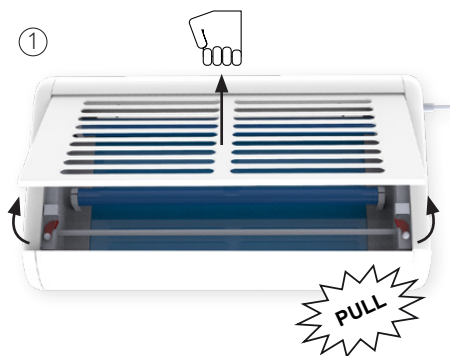
4x 15 W ASTRON
UV-A LED

B. EXPLODED VIEW (see explanation on next page of this manual)

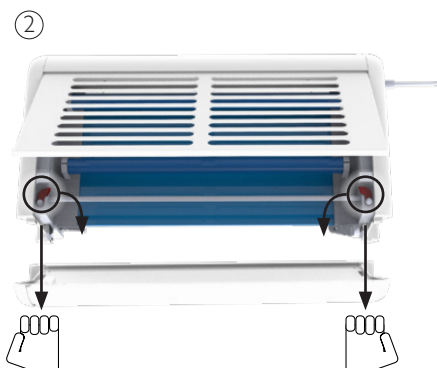


*Main plug: IP20 with separate plug /
IP65 with fixed connection

C. OPENING THE UNIT FOR REPLACEMENTS

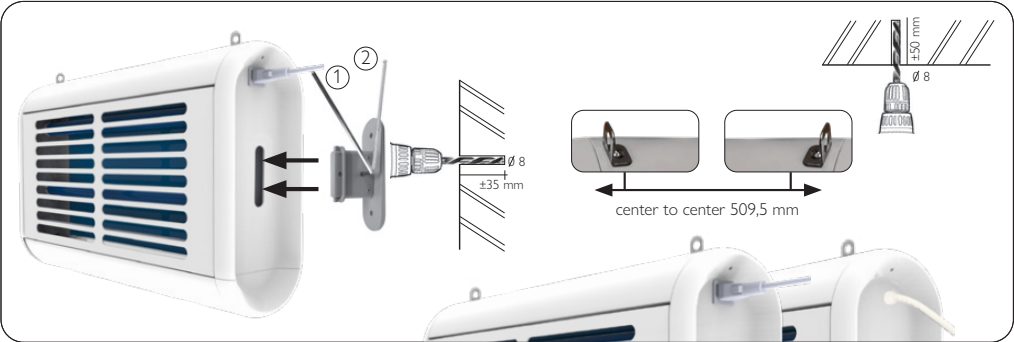


Open front (pull to open).
For replacement lamps.

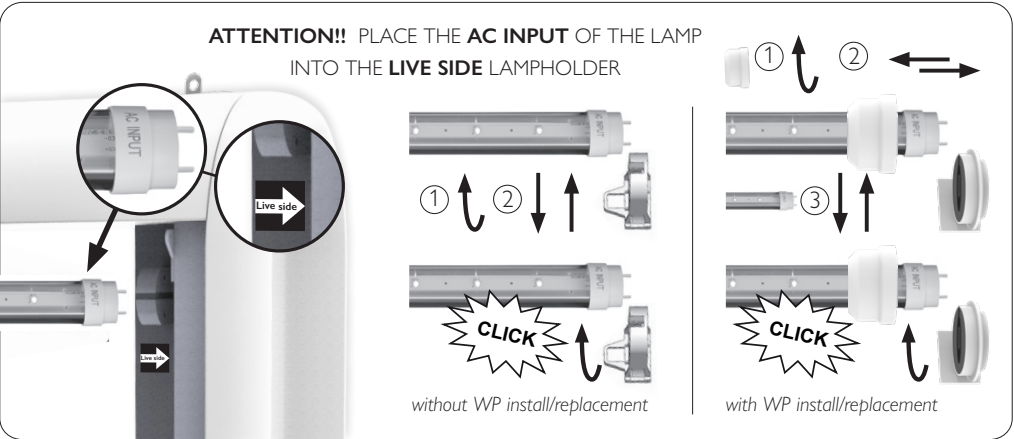


Open bottom.
For replacement glue board.

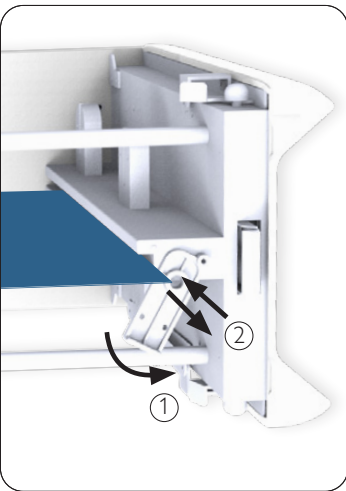
D. WALL/CEILING MOUNTING



E. LAMP INSTALLATION/REPLACEMENT



F. GLUE BOARD INSTALL/REPLACE



G. SPECIFICATIONS OF THE **I-TRAP 120 LED**

Area coverage (m ²)	: up to 120 m ² (depending on situation/location)
Light source (W)	: 4 × 15 Watt ASTRON UV-A LED lamp
Type of UV lamps	: UV Lamps RoHS certified
Electrical supply (V)	: 100-240 V ~ 50-60 Hz
Catch specifications	: Temperature Optimized Glue board
Power consumption	: 44 W
Weight	: 5 kg
Material	: White coated steel casing
Deg. of protection	: IP20 or IP65
Guarantee	: 2 years return to base
Int. building norm	: acc. EN 60335-2-59 int. std. for insect traps
Lamp life time (h)	: 25.000
Dimensions (mm)	: 365 × 580 × 150 (14.3 × 22.8 × 6 inches)
CE-approval	: Yes
Mounting position	: Wall or ceiling mounted
Cable	: Included
Service	: Unit can be serviced without special tools

CERTIFICATION AND DECLARATION

The **I-TRAP 120 LED / I-TRAP 120 WP LED** complies with the EU-directive on machine safety. The unit and spare part components are all in full compliance with the CE directive and the WEEE / RoHS directives. The EC declaration of conformity is listed below:

CE declaration of conformity.

We, Alcochem Hygiene,

Declare, under our responsibility, that the **I-TRAP 120 LED** and **I-TRAP 120 WP LED** insect control unit complies with the following European standards:

- * EN 60335-1 Safety of household and similar electrical equipment.
Part 1: General requirements.
- * EN 60335-2/59 Safety of household and similar electrical appliances.
Part 2: Particular requirements for insect killers.
- * EN 55014 Limits and methods of measurement of radio disturbance characteristics of electrical motor-operated and thermal appliances for household and similar purposes, electrical tools and similar electric apparatus.
- * EN 61000-4-5 Surge immunity requirements (1.2/50 µs and 70/100 µs surge)
- * EN 61000-3-2 Electromagnetic compatibility (EMC) Part 3: Limits Section 2: Limits for harmonic current emissions (equipment input current <16 A per phase) (IEC 1000-3-2:1995)

All according to the definition of the Low Voltage Directive 73/23/EEC and the EMC Directive 89/336/EEC

Important warnings

- The appliance is not to be installed by children or persons with reduced physical, sensory or mental capabilities, or lack of experience and knowledge, unless they have been given supervision or instruction.
- The appliance is to be kept out of reach of children.
- The appliance is not to be used in locations where flammable vapours or explosive dusts are likely to exist.
- If the power cord is damaged, it must be replaced by the manufacturer, its service agent or qualified and licensed electrician in order to avoid a hazard.

Extra attention on the UV Astron LED lamp

- The UV Astron LED lamp is developed to guarantee a long a trouble-free lifetime.
- The UV Astron LED lamp needs to be cleaned periodically (ideally 4 times per year).

As the UV Astron LED lamps become warmer than the conventional UV fluorescent lamps, they attract more dirt and organic particles on its surface.

These particles block the UV-A light, which will affect the attraction potential of the UV Astron LED lamp. Cleaning them with water and a soapy detergent is therefore essential.

Attention

- indoor use only
- for dry areas only
- recycle lamps

for questions:

hygiene@alcochem.com

Exploded view

Descriptions of exploded view parts see section

Pos.	Description	Pos.	Description
1	Cover housing	6	Main plug*
2	Glueboard	7	Bottom housing to change glueboard
3	Housing	8	Mounting ceiling hooks
4	UV-A LED Lamps		
5	Lamp holders		

*Main plug: IP20 with separate plug / IP65 with fixed connection

Spare parts list

Pos.	Description
2	Glueboard AL-001D
5	4x 15 Watt ASTRON UV-A LED lamp



NOTES



Article number of assembled unit:

I-trap 120 LED - 2.05.0025

I-trap 120 WP LED - 2.05.0040

Alcochem Hygiene

NL Head office

Zeilmaker 4

3861 SM Nijkerk

The Netherlands

Phone +31 (0)33 299 4139

hygiene@alcochem.com

