



INSECT CONTROL UNIT



OMNIVEO

WALL MOUNTING SYSTEM

With its discreet design, the Omniveo insect control unit is recommended for use in shops and restaurants and dry industrial environments.

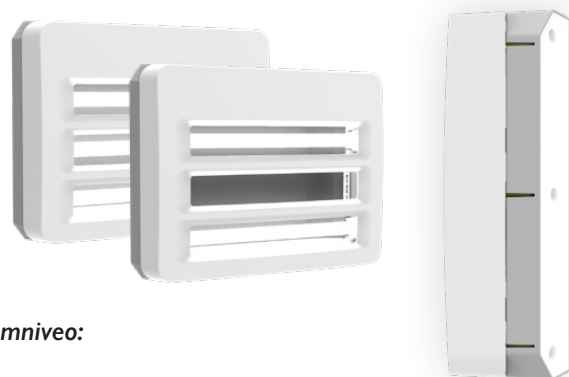
The unit can be wall mounted; centered euro-slot mounting holes offers easy maintenance & service.



ALCOCHEM
HYGIENE



Energy saving & effective control go hand in hand



Omniveo wall mounting system.

Developed to be highly flexible and effective, the OMNIVEO is the latest generation of insect light traps.

Designed around a highly effective ultraviolet light source, service and maintenance can be executed easy and fast. Moreover, the OMNIVEO range is fully approved by TUV Rheinland, this to meet all the relevant standards.

3 positions of your own glueboard

The OMNIVEO provides 3 positions for placing a glueboard. Use your favourite glueboard. Choose one position by clicking on the position holders you can hold the board in place.

Reasons to start using the Omniveo:

- Effective & proven design
- The ABS plastic housing offers a light but strong body, easy to handle.
- Glueboard placed discreetly behind the lamp, which offers optimised performance.
- 2x ASTRON 15 Watt SP UV lamps
- Effective coverage of areas up to 100-150 m².
- Easy to service with direct access to lamps and glueboard.
- Meets ISO 9001 / RoHS & the CE standard. Unit is HACCP compliant.
- Durable quality components, industrial design.
- The OMNIVEO is executed with a high frequency ballast. The electronic ballast also offers a high frequency light pulse which means the insect cannot distinguish the lamp from natural UV-A light so providing greater attraction.
- 2 year full guarantee on the mechanical aspects.



Glueboards

Insects are caught on a glue layer, which preserves them over time. The caught insects can be counted and insect species can be analysed, which offers clear advantages in an IPM approach.



UV-A lamp

The ASTRON lamp is produced in Europe. Lamp reliability and stability are extremely high.

This reduces costs of ownership as it minimises lamp failure.

Technical specifications:

Basic unit

Electrical supply	220-240V ~ 50-60 Hz
Effective area	2 lamps 50 - 100 m ² , 3 lamps 80 - 150 m ²
IP rating	IP 20 or IP 65 (Suited for use in dry or wet areas)
Lamp	2x 15 W or 3x 15 W ASTRON UV-A lamps
Weight	4 Kg
Dimensions	495 x 135 x 370 mm
Glueboard	2.06.6700 - Scannable blue board technology, multiple size board placement
Approvals	CE / UKCA / EMC / LVD / RoHS / REACH / ISO 9001 compliant
Guarantee	2 years on mechanical & electrical performance
Ballast	A Philips Electronic Ballast, 40k hrs lifetime
Housing	ABS housing

